

Wednesday, September 2, 2020

Updates on the Interoperating Procedures Between the Church and the Preschool in the Village

Introduction: Through the summer, a CCA-PIV Interoperation Agreement between the Church and the Preschool in the Village has been developed and put in place. The goal of this effort is to minimize the risk of sharing the facility during the ongoing COVID-19 pandemic. This agreement does put some limitations on what the church and PIV can do within the facility, and is something that all church members need to be aware of. These interoperations procedures are expected to evolve through numerous phases over the course of 2020 and 2021. The first phase we are operating under now is the reopening phase. Future phases are fully expected to incrementally relax the limitations now in place and will be because of improvements and reductions in the health risks of the pandemic. We are all looking forward to those days!

Details of the Reopening Phase Interoperations. To reduce the cross-contamination between the PIV and church staff and congregation members, we have segregated space in the building to Church-only usage, PIV-only usage, and common or shared space. In summary, the PIV Only space includes all classrooms on the 2nd and 3rd floors, the meeting room on the 2nd floor, stairwell and entryway at the northwest corner of the building, restroom at the northwest entry, and the restrooms near the classrooms on the 2nd and 3rd floor. Common or shared space includes the community room and stage, lobby and northeast entrance (keypad lock doorway), one restroom off the lobby, the elevator, and the Bean room. All other space is Church only usage including the northeast stairwell, kitchen, one lobby restroom, all offices, the parlor and its kitchenette, and the entire meetinghouse. We are also temporarily moving the Church School Coordinator's (Marilyn Gibson) office to the office off the Youth Room. Signage is in place throughout the building to delineate building usage. A floorplan showing the segregated space is also attached.

All people entering the church are required to use face masks. Visitor controls will be in place as well. Access codes to the back door will likely be pared back, especially for outside groups. This could affect some congregation members as well, primarily those who do not regularly use the church. Cleaning guidelines per CDC and State of NH Guidelines will also be followed throughout the facility.

For the safety of all, we need everyone to do their part in complying with this CCA-PIV Interoperation Agreement by honoring the building segregation and using personal protection equipment (masks) while in the building. With everyone's cooperation and help, we can all use the church facility in as a safe manner while protecting each other as best as we can.

Please look for additional communication from the team as work progresses. In the meantime, should you have any questions, comments, or concerns, feel free to contact any Ad Hoc Reopening Team members.

Sincerely,

Ad Hoc Reopening Team

Pastor Maureen Frescott

Jessica Greer

Pastor Kate Kennedy

Keith Lammers

Susan Manchester – Chair

Kathy Skoglund

Paul Spiess

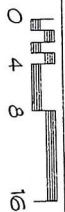
Kate Thompson

Doug Topliffe

Tom and Sue Werst



Scale: 3/32" = 1'-0"

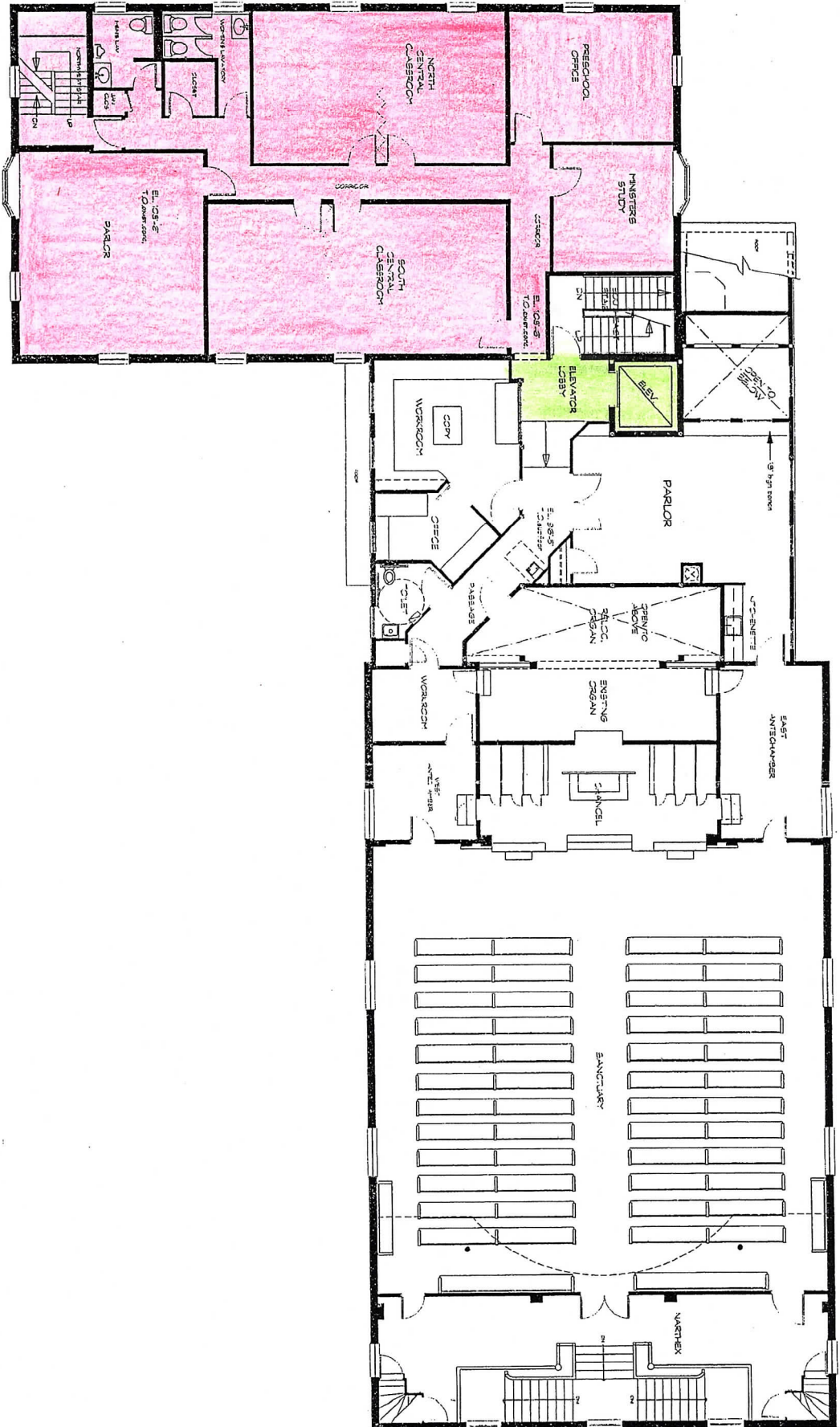


LOWER LEVEL / FIRST FLOOR PLAN

CCH

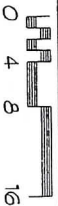
PIV

common



SECOND FLR. / MAIN LEVEL & SANCTUARY

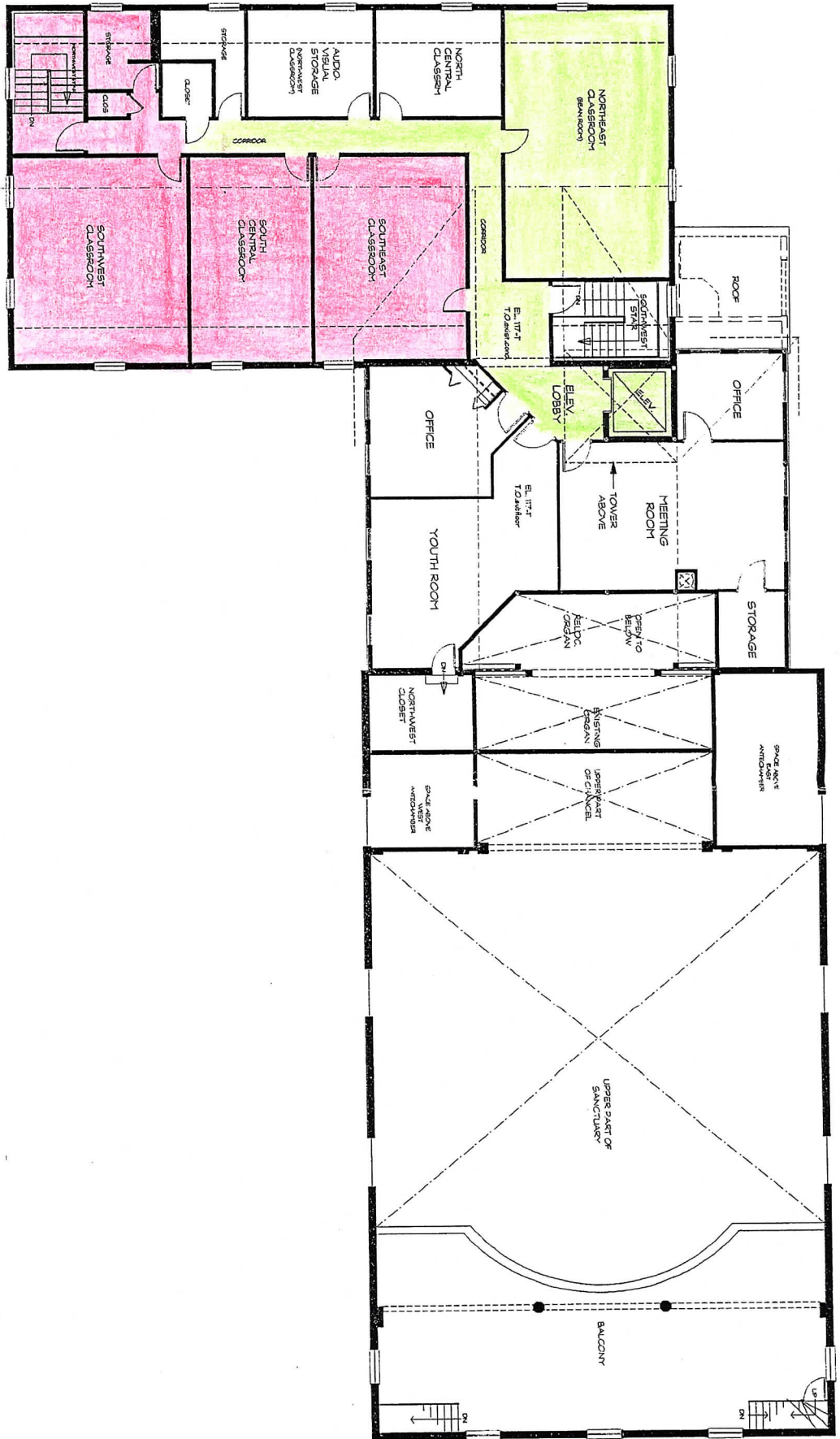
Scale: 3/32" = 1'-0"



CCA

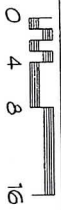
Piv

COMMON



THIRD LEVEL & BALCONY FLOOR PLAN

Scale: 3/32" = 1'-0"



CCA

PIV

Common